

# KEMPE TRAINING, EDUCATION AND CONSULTATION PROGRAM

Sharing our expertise and compassion with today's caregivers and tomorrow's leaders.

## Why CARE:

From parents and foster parents to all kinds of medical professionals, there is a constant need for correct, current information about child abuse. This information is the only way to make sure kids are given the best care possible and are always benefiting from the most recent findings.

## Why KEMPE:

We are dedicated to sharing our years of expertise and our on-going research findings to help parents, professionals and students learn to identify abuse and neglect and treat it most effectively.

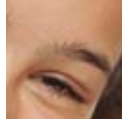
THE KEMPE FOUNDATION FOR THE PREVENTION  
AND TREATMENT OF CHILD ABUSE AND NEGLECT



Renowned experts.  
*Remarkable compassion.*  
Real hope.

# THE MORE WE SHARE

our research, findings, expertise and experience,  
the more we can empower others to help children in need.



## **We train others so they can make an enormous impact on a child's life.**

This Kempe program offers information and training to a wide variety of audiences. We provide consultation services, post-graduate fellowships, and visiting scholars programs for current experts and up-and-coming leaders. In addition, we train child protection professionals and foster parents in the community, and we respond to clinical calls and e-mails arriving at our center. We also work on legal and social science research projects and implement training and education programs for those in the fields of medicine, law, social work, and mental health. Each year, medical students and residents from across the U.S. spend elective time at The Kempe Center adding to our competent team and gaining invaluable experience for their careers in the fight against child abuse.

## **Our training provides a constant source of information to caseworkers, keeping them up-to-speed on the best care.**

We provide statewide training workshops to child welfare caseworkers. We make sure they are kept abreast of advances in knowledge and best practices in our community and beyond. With a high turnover rate of 33-50% per year of professionals in many of these positions, this training makes sure the latest and best information is being used to care for kids throughout each year.

## **Our impact reaches far beyond our community's borders.**

Our continuing education programs translate current research into "best practices" for over 730 professionals in Colorado and other states, including more than 500 case workers and foster parents trained for the Colorado Department of Human Services. In addition, we provide consultation services for complex child abuse and neglect cases in civil or criminal courts. Our State and Regional Team (START) includes licensed clinical social workers, pediatricians, pediatric lawyers, and other professionals as needed, such as a forensic psychiatrist, psychologists, forensic odontologist, consulting prosecutor, and consulting law enforcement officer.

## **We work with the best, offer guidance to the brightest.**

At Kempe, we are proud to be an integral part of teaching and consultation to many experts who have a compassion for helping children. In the past five years, we have worked on everything from liability issues for dentists reporting suspected abuse, the evolving role of children's lawyers, witness preparation for child abuse trials, intervention strategies for abused children with disabilities, and termination of parental rights due to abuse or neglect.

*To find out more about this program and our other Kempe programs, please visit [www.kempe.org](http://www.kempe.org)*

