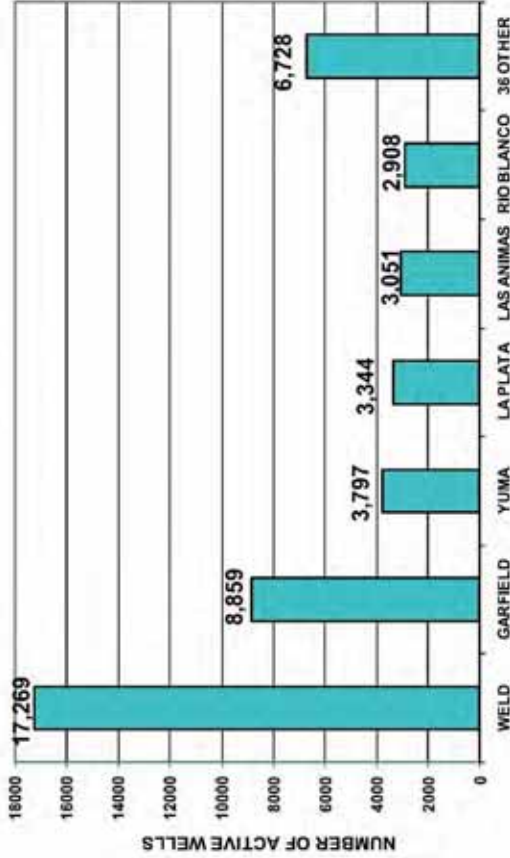


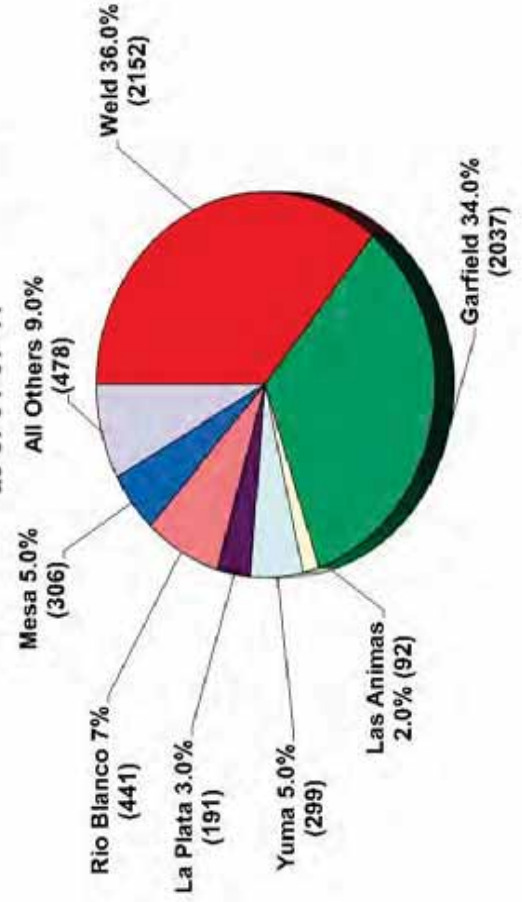
NUMBER OF ACTIVE COLORADO OIL & GAS WELLS BY COUNTY

86.0% of Colorado's 45,956 active wells are located in these 6 counties (09-07-11)



COLORADO OIL AND GAS 2010 DRILLING PERMITS BY COUNTY

as of 01-07-11



Weld County Oil and Gas Land Use Considerations



Weld County

Weld County covers an area of 3,999 square miles in north central Colorado. It is bordered on the north by Wyoming and Nebraska and on the south by the Denver metropolitan area. The third largest county in Colorado, Weld County has an area greater than that of Rhode Island, Delaware and the District of Columbia combined.

There are 31 incorporated towns in Weld County.

Residential Population

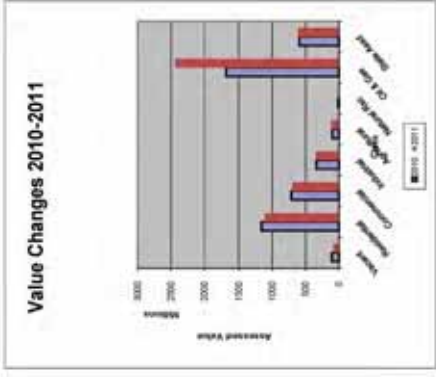
1970	89,797
1980	123,438
1990	131,821
2000	186,936
2010	252,825



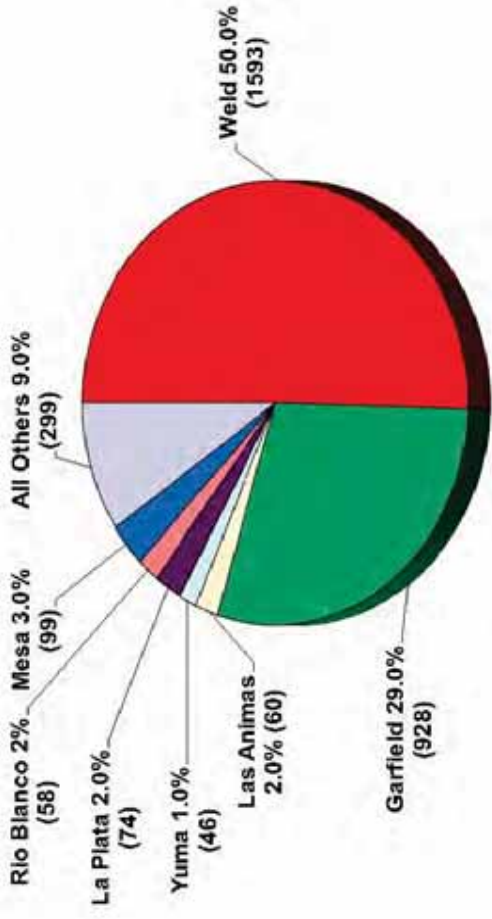
Weld County Assessed Taxes

Total Taxable Assessed for 2010

Class	Value	Percentage of Total
Vacant	82,826,600	1%
Residential	1,110,643,300	20%
Commercial	700,065,100	12%
Industrial	344,515,260	6%
Agricultural	117,843,120	2%
Natural Rsc	12,839,310	<1%
Oil & Gas	2,439,331,500	44%
State Assd	615,809,100	11%



COLORADO OIL AND GAS 2011 DRILLING PERMITS BY COUNTY as of 09-07-11



WELD \$0

Total Long Term Debt for All Colorado Counties \$14,010,834,152

Weld Only One In Colorado Without Debt NO SALES TAX, NO LONG TERM DEBT

As Weld County enjoys its 150th anniversary, we have a lot to celebrate! Weld boasts a major University, some of the most productive farmland in the country and no long term debt. Surrounding counties are millions in debt, while Weld County enjoys a balanced budget.

LAND USE IS LOCAL

- No State or Federal oversight!



Oil and gas is a fixture in life, government of Weld County

Greeley Tribune, September 21, 2011

Jobs, Jobs, Jobs – Oil & Gas

- 49,000+ direct jobs
- 46,000+ indirect jobs (dependent on industry)
- 94,000+ induced jobs (created from expenditures)
- TOTAL 190,000 jobs or 6% total employment



Tank battery

Cashing in: Energy leases, royalties changing lives in rural Weld

Greeley Tribune, September 18, 2011

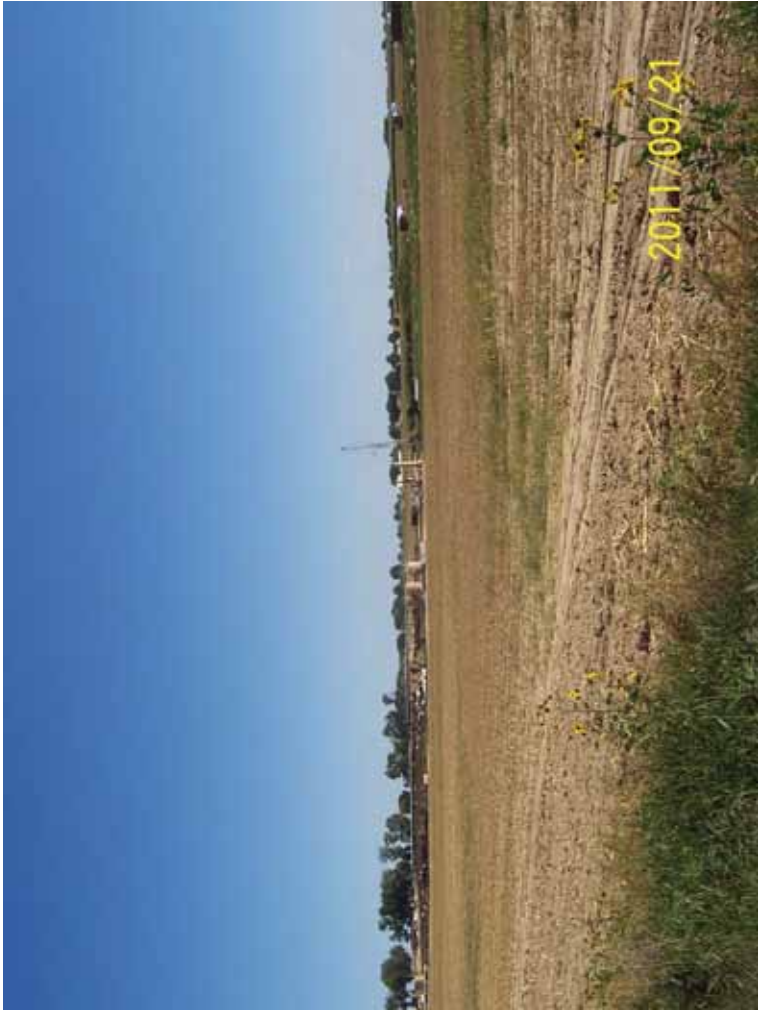




Tank battery



2011/09/21



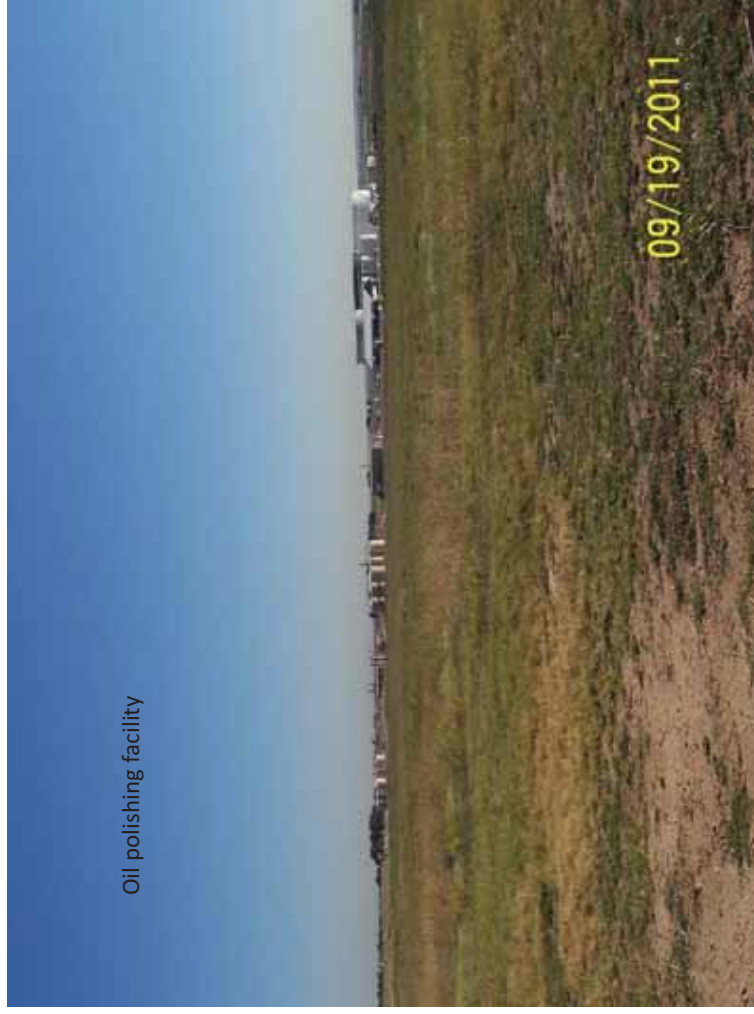
2011/09/21



2011/05/06

landfarm

Oil polishing facility



Gas processing facility



What do you call this?



Tank battery





Injection well



Tank battery



Injection well

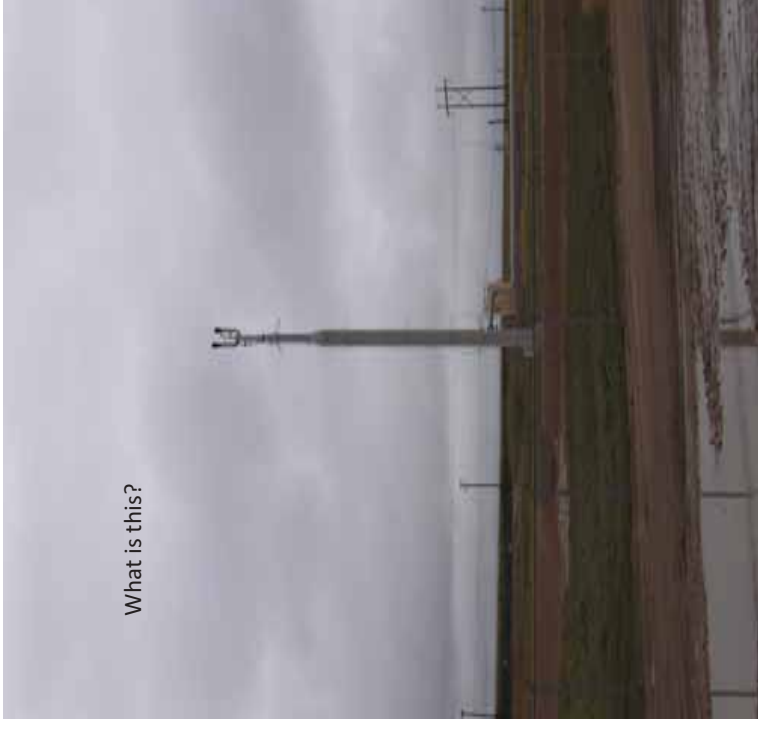


Well being drilled....

Tank battery



What is this?



Other Oil and Gas Facilities:

- Pipelines
- Evaporation ponds
- Commercial water operations/hauling
- Water recycling facilities
- More to come.....

Compressor station



Weld does Oil and Gas Support Facilities

- Injection wells
- Compressor stations
- Landfarms
- Processing facilities
- Pipelines
- Water hauling
- Roustabout services
- Oil polishing facilities
- Pipe yards
- What else?

Land Use Review and Approval, via Use by Special Review (USR) process. USR administered through the Planning Department and approved by County Commissioners.

Process includes:

- Public notice (newspaper, property posting, resident letters)
- Public hearings
- Referrals to interested or affected agencies
- Referrals to other County Departments

What does Weld do and don't do:

- Weld don't do tank batteries, well sites, ie. production sites.

Only requirements are for access permits and building permits (setbacks and building codes)



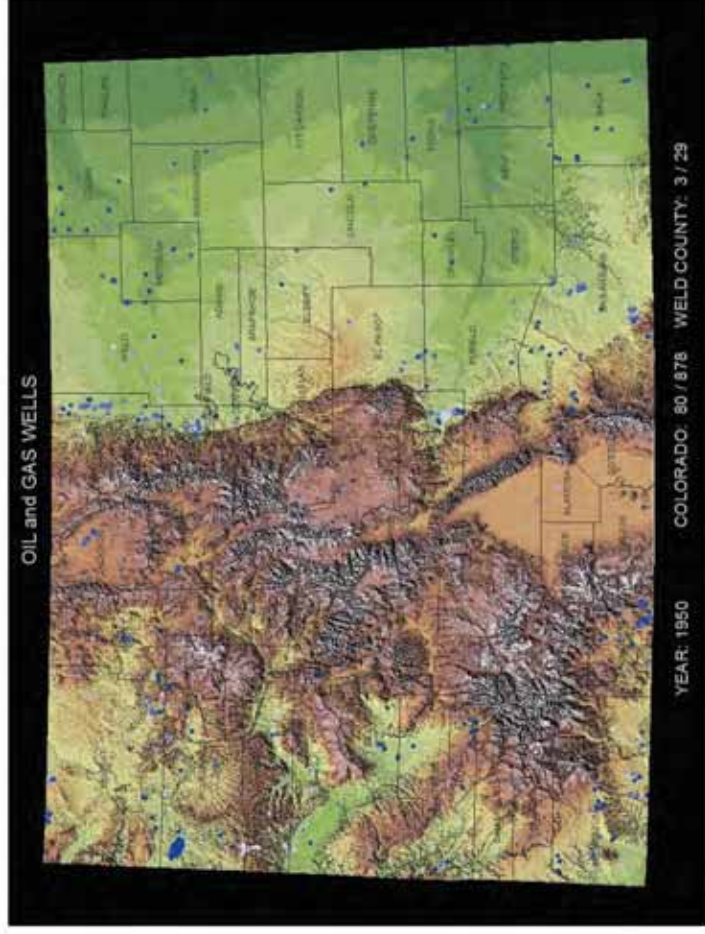
Tank battery

Planning compiles input from referrals and reviews for things such as:

- Compatibility
- Setbacks
- Overlay districts (flood plain, geohazards, airports, etc.)
- Parking
- Landscaping
- Building requirements

Public Works Reviews and provides comments concerning:

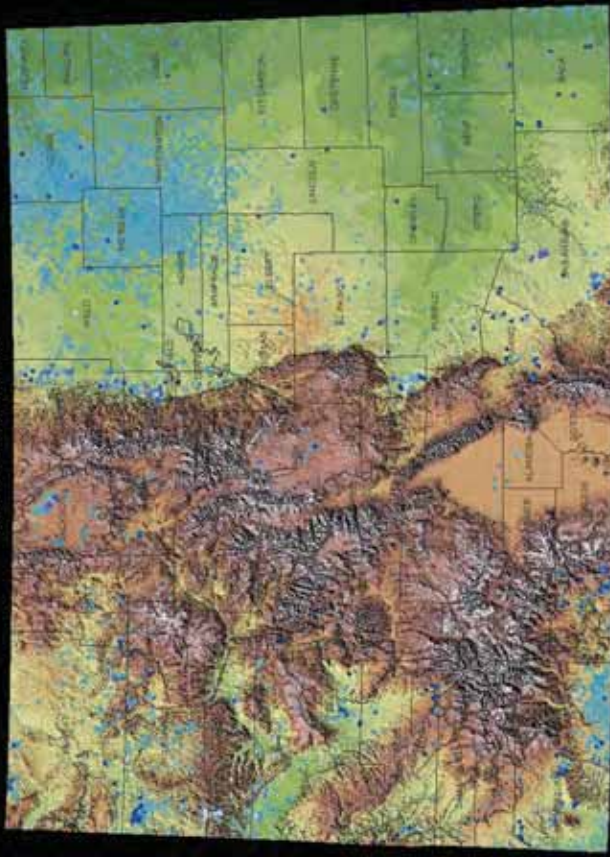
Access, parking, circulation, turning radius, signs, road ROW, easements, impacts to county roads (tracking pads, etc.), grading, flood plains, traffic control (based on # trips, size and type of vehicles, improvements agreements, site drainage)



Public Health reviews and provides comments concerning:

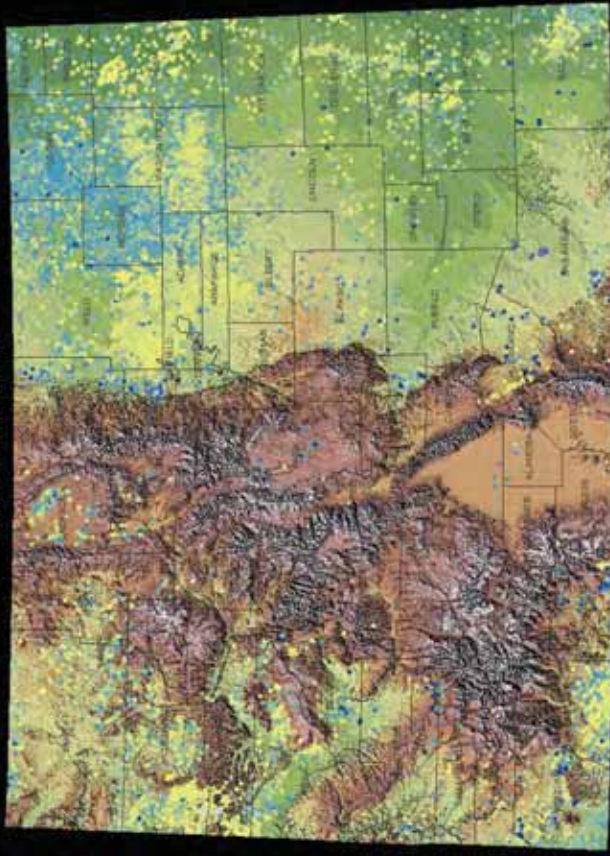
- Adequate water and sewer
- Noise
- Traffic
- On-site dust control
- Waste management
- Environmental controls – construction
- Environmental monitoring – gw monitoring, stormwater collection, etc.

OIL and GAS WELLS



YEAR: 1960 COLORADO: 633 / 9345 WELD COUNTY: 14 / 666

OIL and GAS WELLS



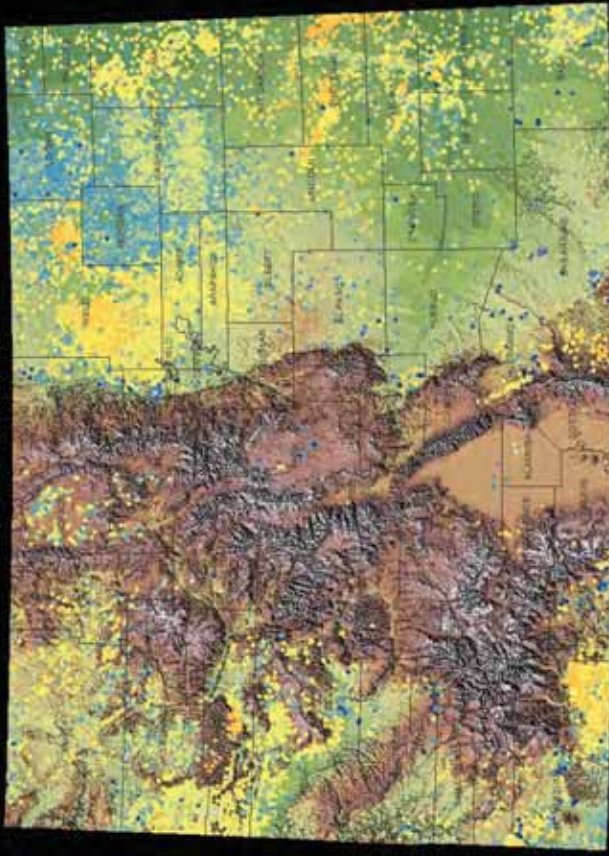
YEAR: 1980 COLORADO: 1,693 / 27210 WELD COUNTY: 260 / 3957

OIL and GAS WELLS



YEAR: 1970 COLORADO: 716 / 15318 WELD COUNTY: 73 / 1082

OIL and GAS WELLS



YEAR: 1990 COLORADO: 1,246 / 42137 WELD COUNTY: 313 / 8073

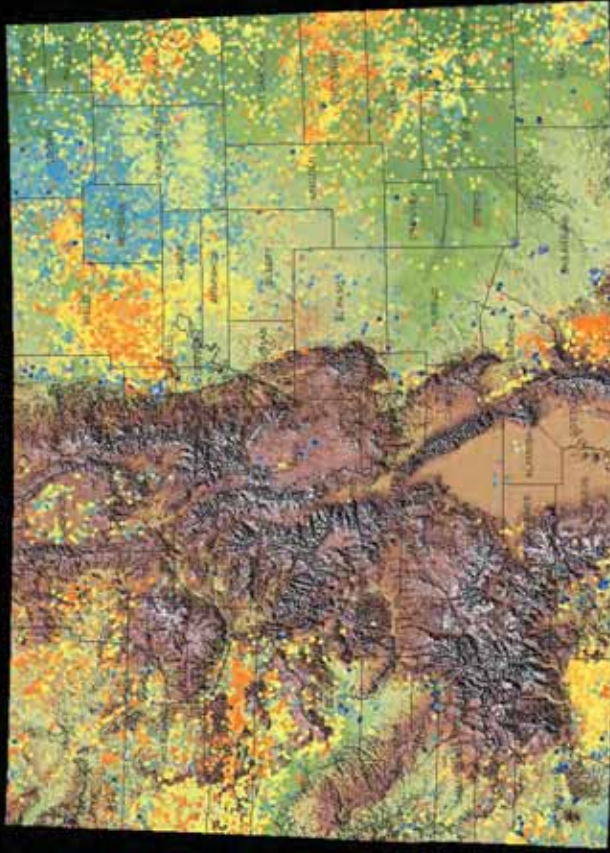
OIL and GAS WELLS



YEAR: 2009

COLORADO: 3429 / 67242 WELD COUNTY: 844 / 16448

OIL and GAS WELLS



YEAR: 2000 COLORADO: 1079 / 55566 WELD COUNTY: 268 / 13236

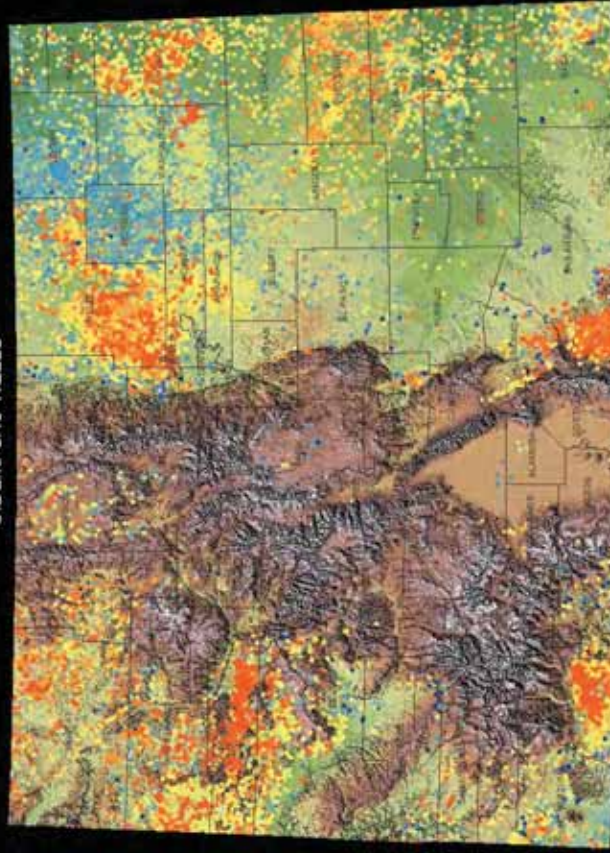
OIL and GAS WELLS



YEAR: 2005

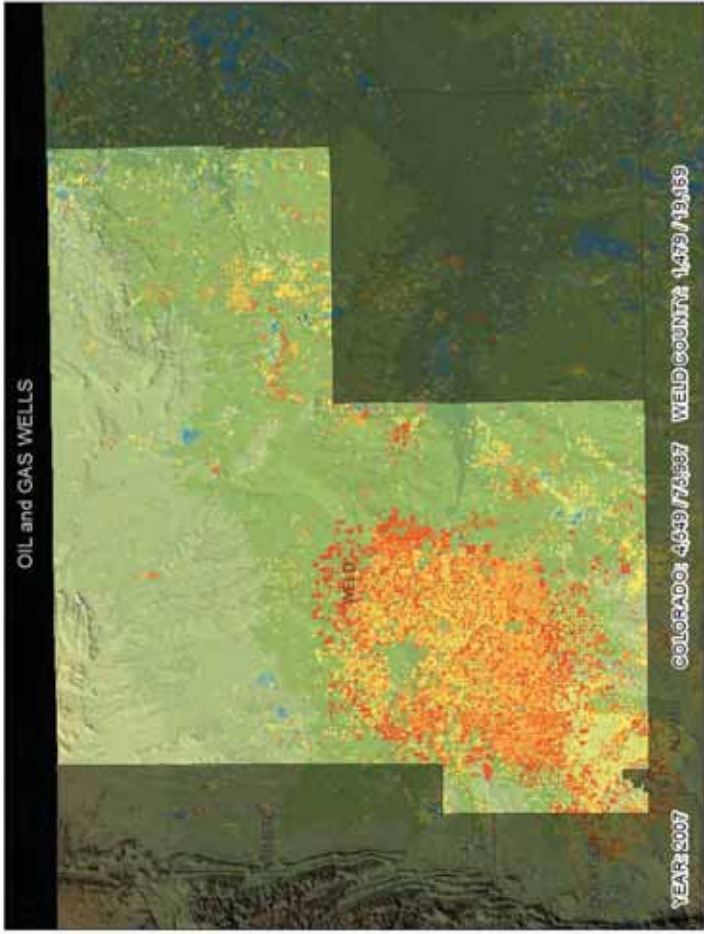
COLORADO: 3429 / 67242 WELD COUNTY: 1543 / 77350

OIL and GAS WELLS

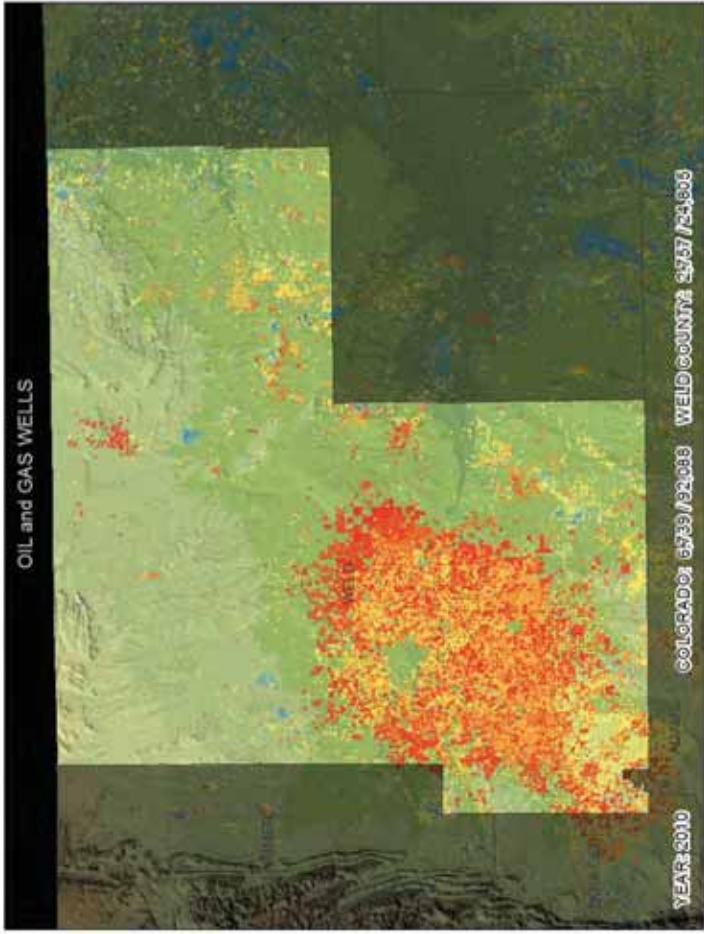


YEAR: 2005 COLORADO: 3429 / 67242 WELD COUNTY: 844 / 16448

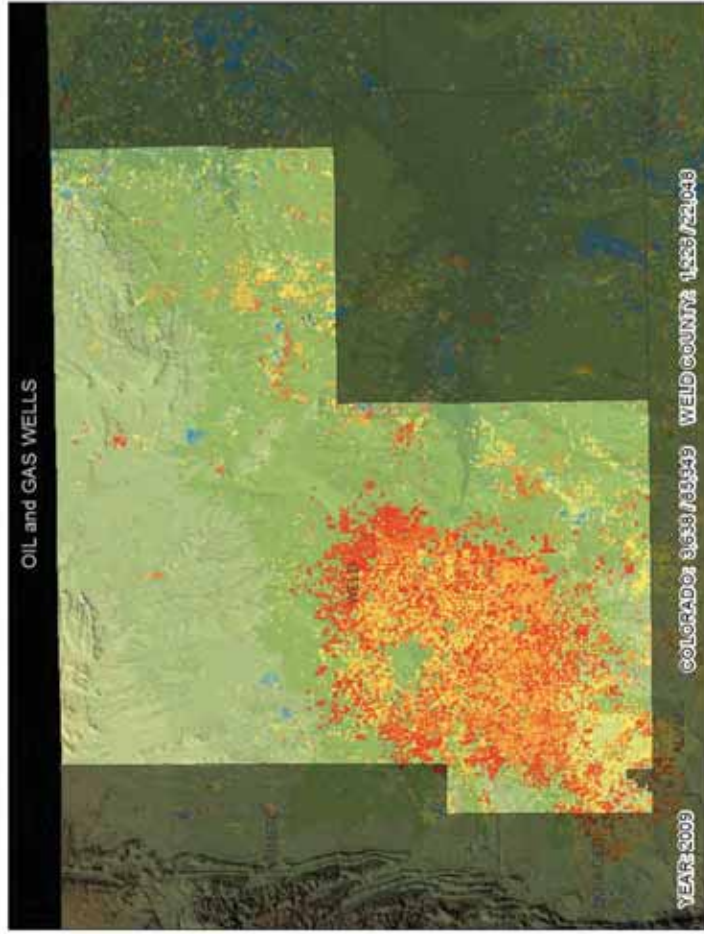
OIL and GAS WELLS



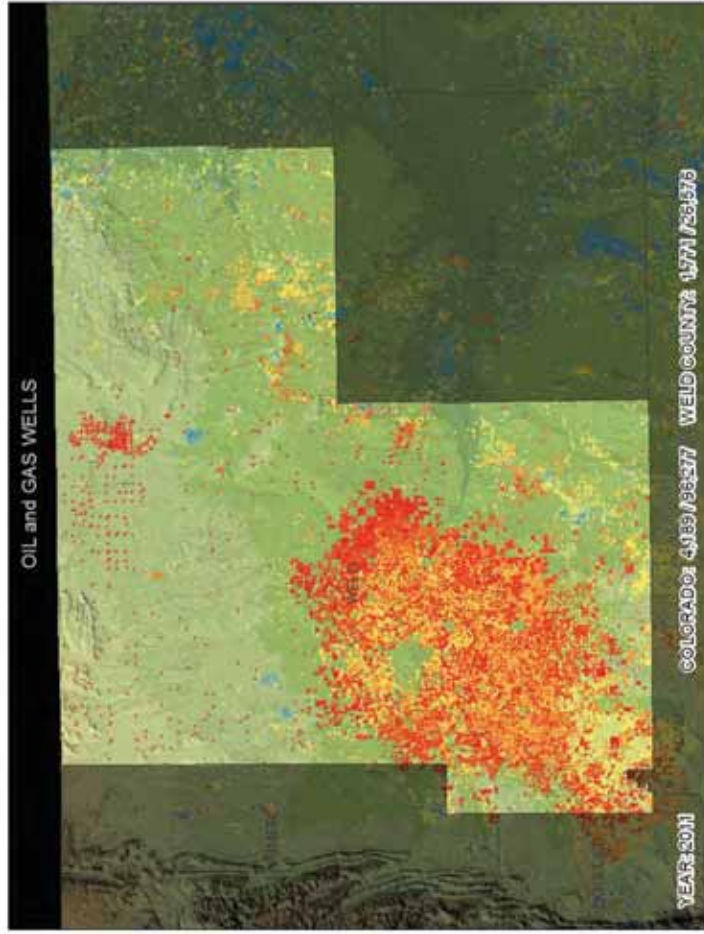
OIL and GAS WELLS



OIL and GAS WELLS



OIL and GAS WELLS



10 Essential Environmental Public Health Services



Trevor Jiricek
 Weld County Environmental Health and Planning Services
 1555 N. 17th Avenue
 Greeley, Colorado 80634
 970-304-6415, ext. 2214

10 Essentials

Defined:

- Monitor** environmental and health status to identify and solve community environmental public health problems
- Diagnose and investigate** environmental public health problems and health hazards in the community
- Inform, educate, and empower** people about environmental public health issues
- Mobilize community partnerships and actions** to identify and solve environmental health problems
- Develop policies and plans** that support individual and community environmental public health efforts
- Enforce** laws and regulations that protect environmental public health and ensure safety
- Link** people to needed environmental public health services and assure the provision of environmental public health services when otherwise unavailable
- Assure** a competent environmental public health workforce
- Evaluate** effectiveness, accessibility, and quality of personal and population-based environmental public health services
- Research** for new insights and innovative solutions to environmental public health problems



Environmental Health
 in the
 Gas Fields of Garfield County

Tips for Local Health Departments

- Learn about the Industry
- Establish solid working relationships with the industry and industry regulators
- Maintain a balanced perspective – risks vs. benefits
- Engage in local oil and gas issues
- Strive to answer key public health questions
- Develop creative approaches to address problems

Jim Rada
Garfield County Public Health
195 W. 14th Street
Rifle, CO 81650
970-625-5200 x8113
<http://www.garfield-county.com/environmental-health/index.aspx>

10 Essentials Implemented: Garfield County

Monitoring – Air monitoring (ambient and targeted), Piceance Basin Water Quality Data Repository,

Diagnose/Investigate – Complaints, coordinated response, recognize trends, suggest innovation, noise studies

Inform, Educate, Empower – Smart Citizens Series on Air Quality, Air Quality Website, Battlement Mesa HIA, Well Water Treatment Guide

Mobilize Community Partnerships – Battlement Mesa HIA, EAB Educational Committee, Water Quality Data Repository Task Force, Middle Colorado River Watershed Partnership, Garfield County Public Safety Council

Develop Policies and Plans – Temporary Housing facilities, Reuse OWS Permits, Emergency Response and Planning, Land use reviews, Garfield County Air Quality Management Program Plan

10 Essentials Implemented: Garfield County

Enforce Laws and Regulations – Know the laws and regulations, Act as local eyes and ears for the regulatory authorities, Facilitate compliance during land use permitting, Reg 7 changes, O&G Rules, Temporary Housing Land Use Rules

Link People to EH Services – Know who has authority, Know Industry EHS Professionals, Diesel School Bus Retrofit Project, Wood Stove Change Out

Competent Work Force – Energy Advisory Board, local forums, Site Tours, Professional Training

Evaluate effectiveness, accessibility, and quality of EH Programs – Air Monitoring Program modifications, complaint response coordination

Research for insights and Innovation – RGI Grant, HIA, EHMS, CARE Grant, Health Risk Analysis, SEP Opportunities, Mamm Creek Hydrogeological Study, EnCana Condensate Burn Study