A stylized tree with a brown trunk and branches. The leaves are represented by various colored shapes (green, yellow, purple, orange, pink, blue) with white outlines. The tree is positioned on the left side of the slide, with its trunk extending down to the bottom edge. The background is split into a white top half and a blue bottom half.

Boulder County Zoonotic Update 2011

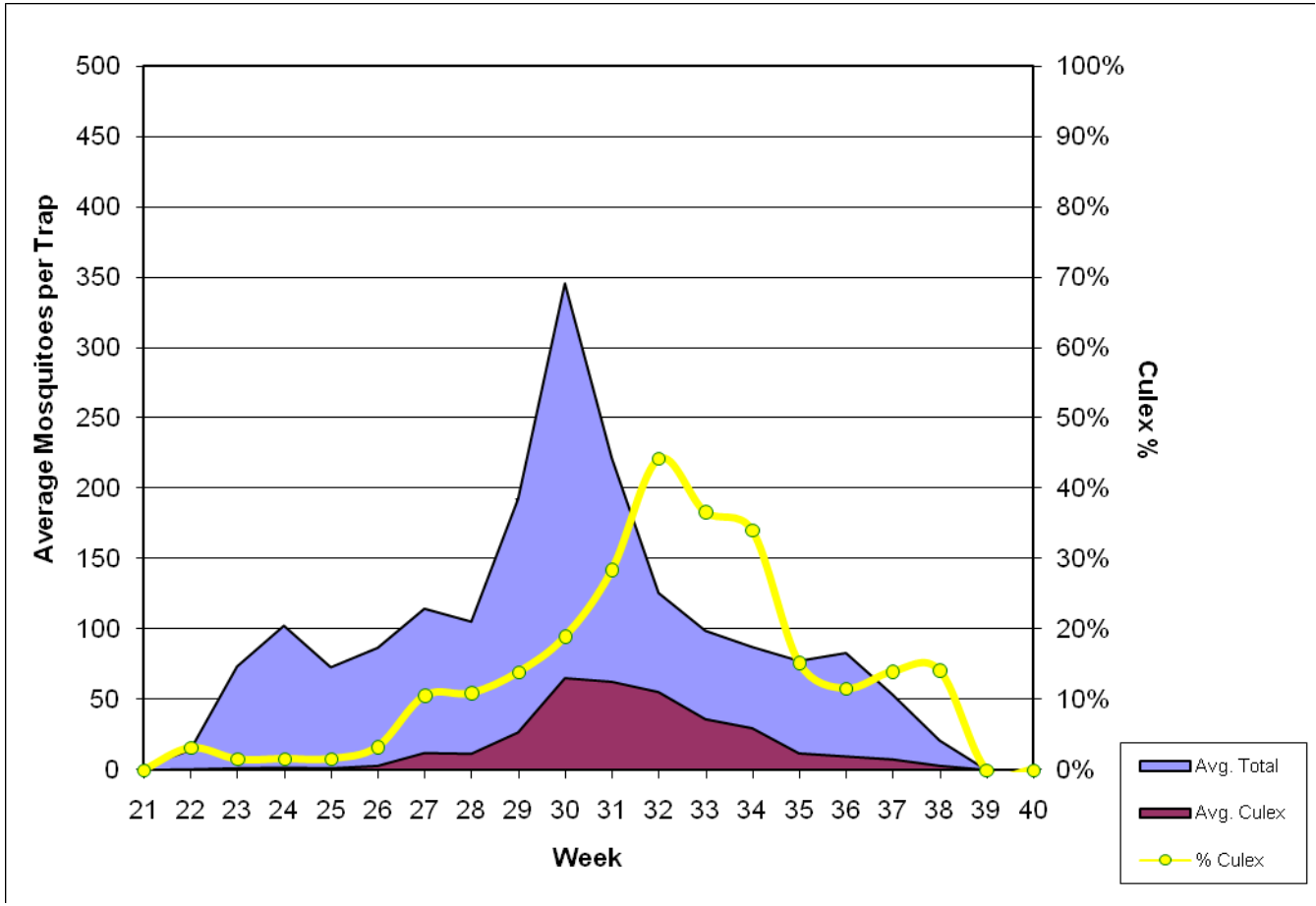
Marshall D. Lipps, MPH
Environmental Health Specialist

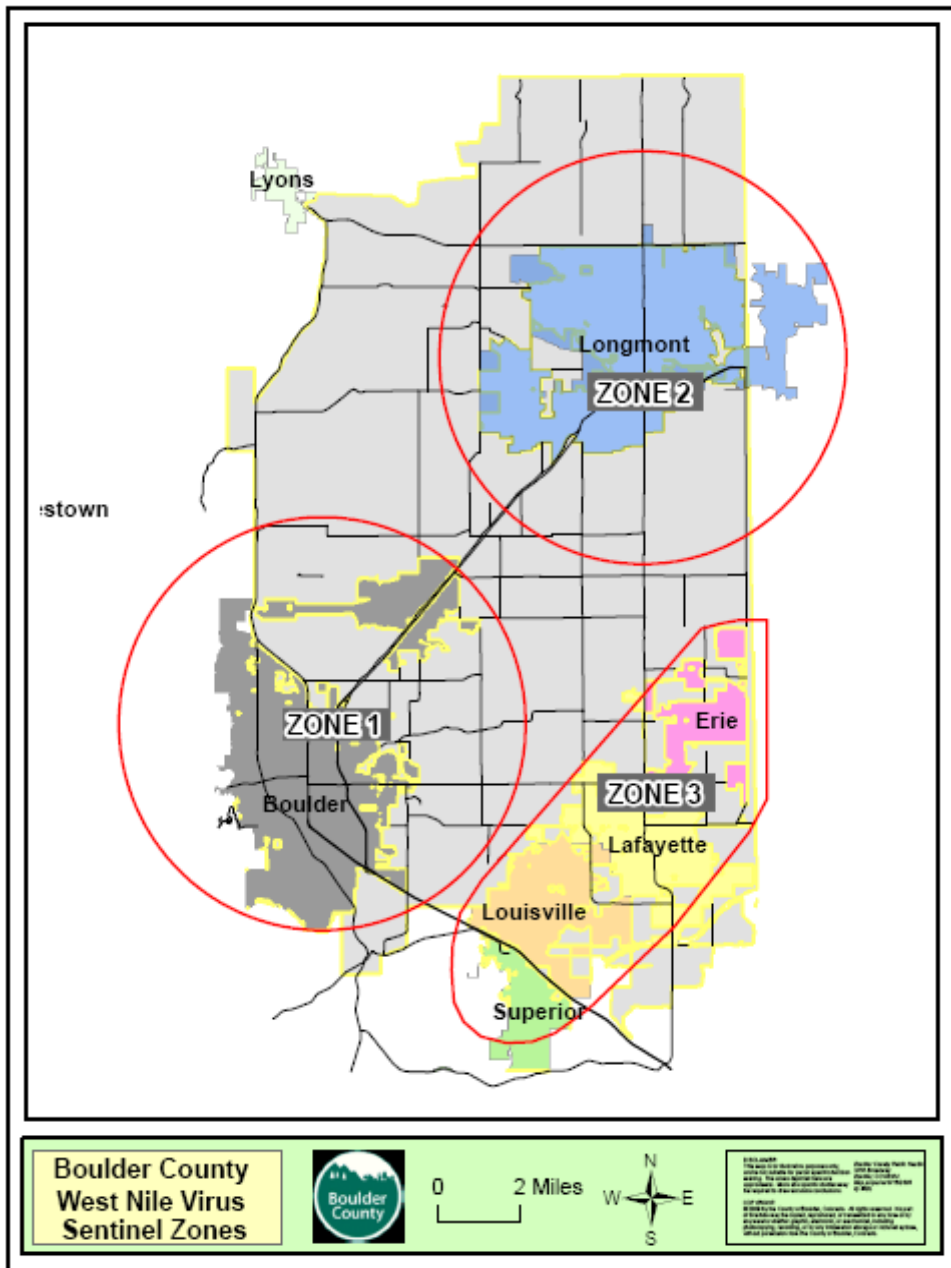
West Nile Virus

- 205 mosquito pools submitted
- 9 positive pools (4.4%)
- 4 positive pools non-tarsalis
- 2 Human cases
- 0 Deaths



Mosquito Season Summary





VECTOR INDEX LOG			
	ZONE 1	ZONE 2	ZONE 3
Season Week	Vector Index	Vector Index	Vector Index
Week 21	0.00	0.00	0.00
Week 22	0.00	0.00	0.00
Week 23	0.00	0.00	0.00
Week 24	0.00	0.00	0.00
Week 25	0.00	0.00	0.00
Week 26	0.00	0.00	0.00
Week 27	0.00	0.00	0.00
Week 28	0.00	0.00	0.00
Week 29	0.00	0.00	0.00
Week 30	0.00	0.00	0.00
Week 31	0.00	0.00	0.19
Week 32	0.20	0.00	0.00
Week 33	0.41	0.00	0.00
Week 34	0.00	0.20	0.33
Week 35	0.10	0.00	0.13
Week 36	-----	-----	-----
Week 37	-----	-----	-----
Week 38	-----	-----	-----
Week 39	-----	-----	-----
Week 40			

Rabies

- 171 Tested specimens
 - 157 Bats
 - 5 Dogs
 - 4 Skunk
 - 4 Raccoons
 - 1 Cat
- 16 Positive (Bats)
- Heavy infestation at senior living center



Plague

- 6 Tested specimens
- 3 Positives
- Epizootic in Boulder
- Posted initial area
- Many additional reports
- Expanded postings as needed



Numbers by Week

TESTED VECTORS							POSITIVE VECTORS					
	RABIES	PLAGUE	TULAREMIA	WNV POOLS	HANTA VIRUS	TOTAL	RABIES+	PLAGUE+	TULAREMIA+	WNV POOLS+	HANTA VIRUS+	TOTAL
Wk 1-20	13	0	0	0	0	13	0	0	0	0	0	0
Wk21	2	1	1	0	0	4	0	1	0	0	0	1
Wk22	3	2	2	0	0	7	0	1	0	0	0	1
Wk23	7	0	0	0	0	7	3	0	0	0	0	3
Wk24	6	0	0	3	0	9	2	0	0	0	0	2
Wk25	7	3	3	2	0	15	2	1	0	0	0	3
Wk26	3	0	0	4	0	7	0	0	0	0	0	0
Wk27	6	1	1	9	0	17	0	0	0	0	0	0
Wk28	9	0	0	10	0	19	0	0	0	0	0	0
Wk29	17	0	0	27	0	44	0	0	0	0	0	0
Wk30	16	0	0	50	0	66	0	0	0	0	0	0
Wk31	15	0	0	43	0	58	1	0	0	1	0	2
Wk32	9	0	0	21	0	30	0	0	0	1	0	0
Wk33	14	0	0	16	0	30	0	0	0	2	0	0
Wk34	20	0	0	13	0	33	3	0	0	3	0	5
Wk35	6	0	0	7	0	13	1	0	0	2	0	1
Wk36	3	0	0	0	0	3	2	0	0	0	0	2
Wk37	7	0	0	0	0	7	2	0	0	0	0	2
Wk38	5	0	0	0	0	5	0	0	0	0	0	0
Wk39	3	0	0	0	0	3	0	0	0	0	0	0
Wk40												
TOTAL TO DATE	171	7	7	205	0	390	16	3	0	9	0	22

Numbers by Species

SEASON-TO-DATE DISEASE TESTING BY SPECIES				
<i>Species</i>	Rabies	Plague	Tularemia	Hanta
Bat	157	0	0	0
Skunk	4	0	0	0
Raccoon	4	0	0	0
Squirrel	0	2	2	0
Cat	1	2	2	0
Flea	0	1	1	0
Dog	5	0	0	0
Prairie Dog	0	1	1	0
TOTALS	171	6	6	0

SEASON-TO-DATE DISEASE POSITIVES BY SPECIES				
<i>Species</i>	Rabies	Plague	Tularemia	Hanta
Bat	16	0	0	0
Skunk	0	0	0	0
Raccoon	0	0	0	0
Squirrel	0	2	0	0
Cat	0	1	0	0
Flea	0	0	0	0
Dog	0	0	0	0
Prairie Dog	0	0	0	0
TOTALS	16	3	0	0

2012 and Beyond

- Continue rabies vaccination campaign
- Increase cooperation with local ACO's and PD's
- Analyze mosquito control survey results
- Mosquito control RFP

