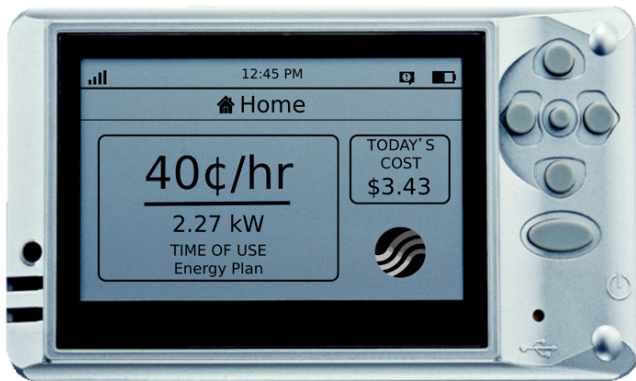


SmartLook™

The World's First Refrigerator Magnet
In-home Display



Specifications

Smart Meter Support

- ZigBee Smart Energy Profile 1.0 Certified (With full 1.1 / 2.0 upgrade capability)
- Reads real-time electric instantaneous and cumulative usage data directly from Smart Meter
- Retrieves utility broadcast information from Smart Meter or gateways
- Price messaging from Energy Service Portal
- Time Synchronization
- Full ECC encryption with digital certificates
- Optional USB port

User Interface

- High contrast B&W display
- Audio alert
- Simple, 6 push-button page navigation

Package

- Rechargeable lithium-ion battery (operates 3+ months on a 3.5 hour charge)
- Dimensions: 3.88 in. x 2.19 in. x .5 in.
- Weight: 4 ounces

Radio Features

- Better than 100 ft. communication distance
- Power amplifier and receiver sensitivity boost

Utility OEM Customization

- Customizable Energy Management solutions
- PC host extension for mini gateway and consumer portal connectivity
- Available in multiple colors

Wireless Glue Networks' SmartLook display unit gives utility customers easy wireless access to their Smart Meters for real-time information about their energy usage, while giving utilities a direct connection to customers and their energy demands.

The sleek, feature-rich SmartLook display unit is over-the-air upgradeable and can store historical usage data for later retrieval and analysis by customers.

This easy-to-use refrigerator magnet device represents a crucial first step toward the future of Smart Energy—empowering customers to make intelligent energy decisions based on their personal values and financial objectives, and enabling them to manage their energy consumption in ways never before possible.



For more information contact:
info@wirelessglue.com